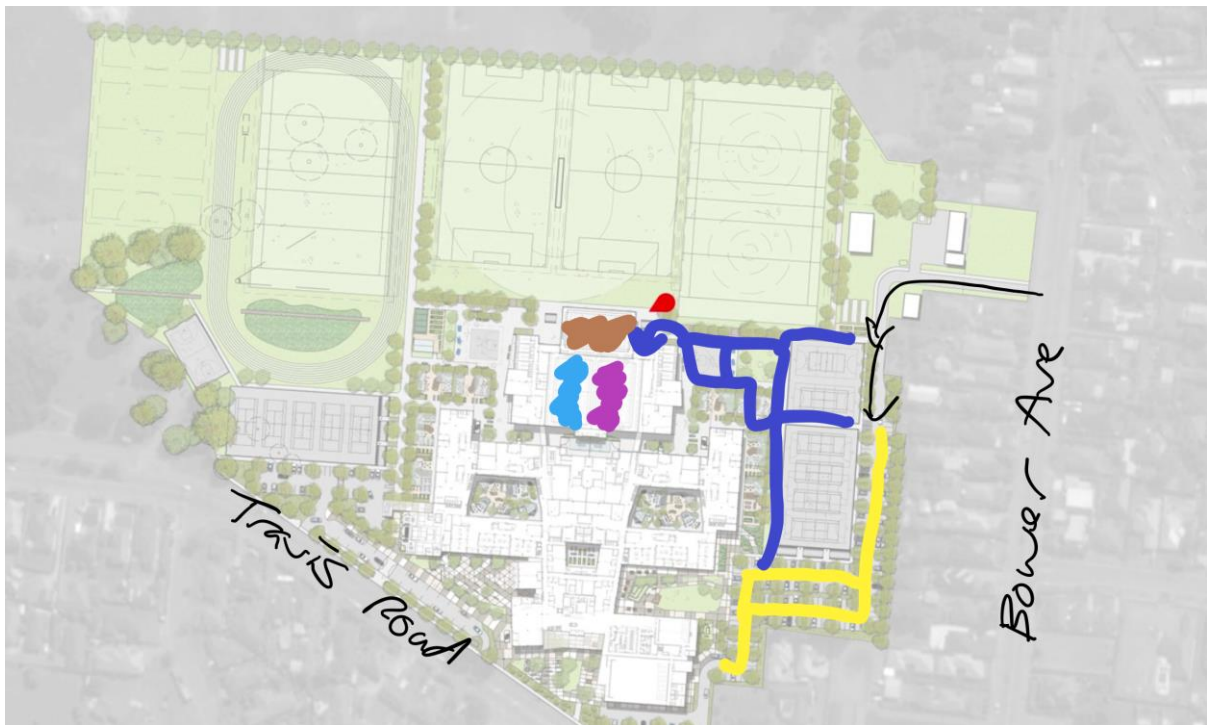


Access and Location for Avonside Girls' and Shirley Boys' Basketball Gyms at Ōrua Paeroa



Key

- Black – best vehicle entry (off Bower Ave)
- Yellow – best parking location
- Blue – easiest pedestrian entry to the gym (we only use the Avonside Foyer for entry – by the red mark)
- Avonside is the half of the gym closest to Bower Ave (Maroon)
- Shirley (Caroline Blue) is the further half
- The shared gym is at the northern end of the map (tan) – which we are not currently using